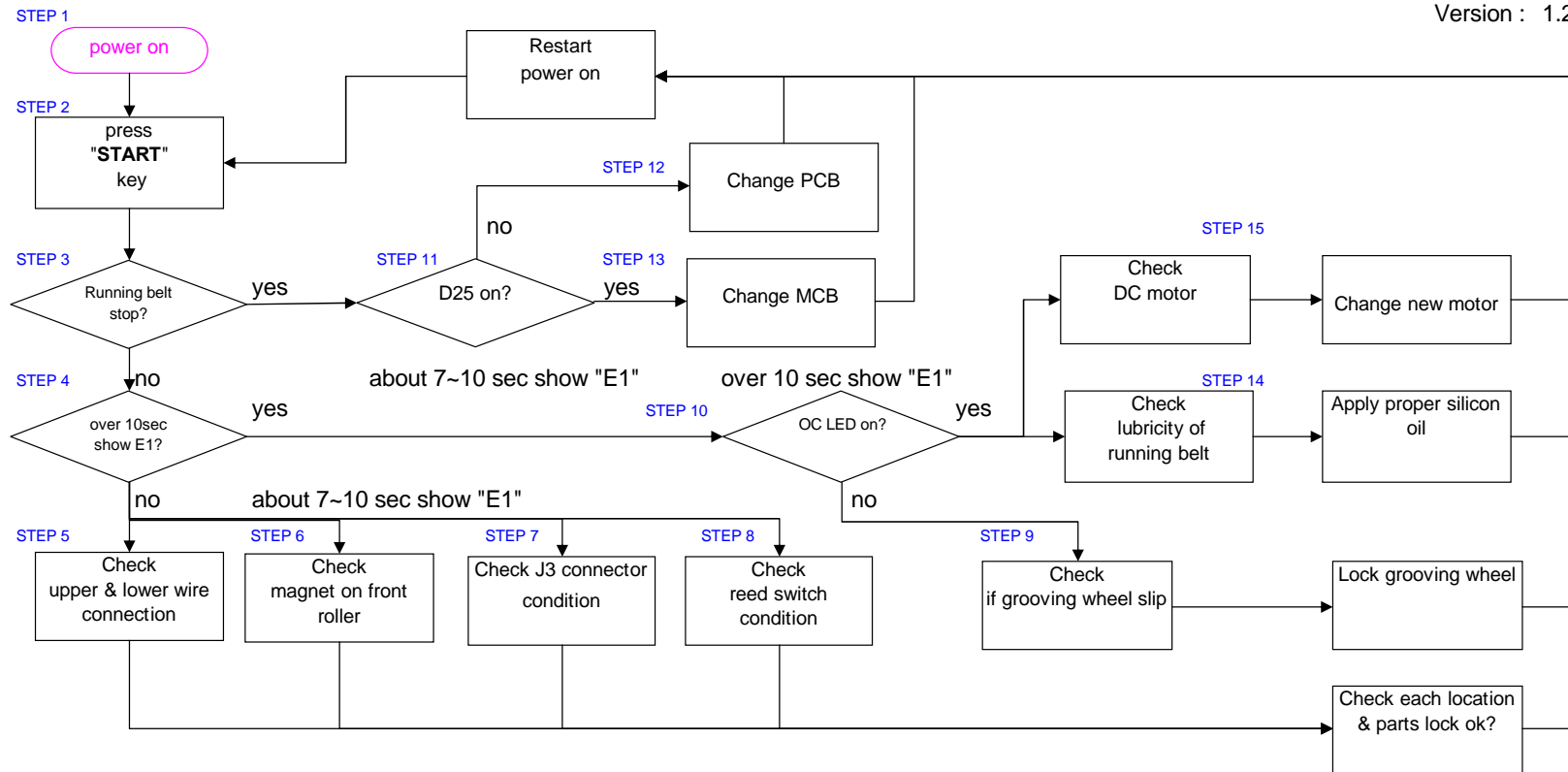


**Error code = E1**

**1.Flow chart of E1 Check(For XT2700/3200/3300/5600/5700/7600)**

Wisdom 1215'04  
Version : 1.2



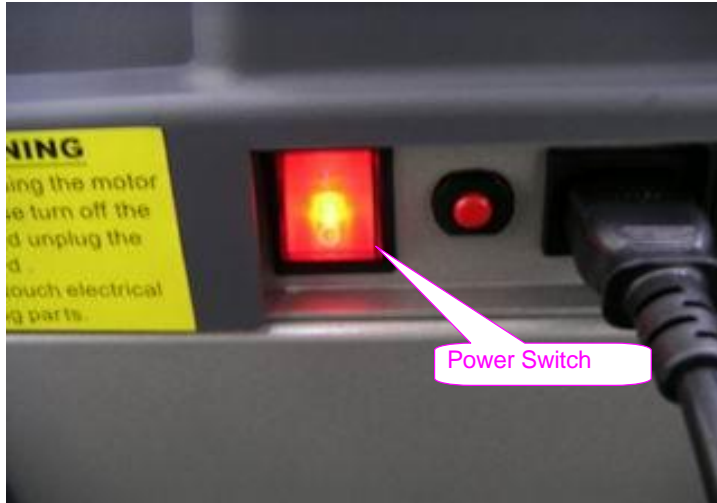
# Treadmill Trouble Shooting Guide(Error code check eliminate)

## \*Explanation

STEP 1 : Power on---

Power switch on , lights on & upper board reacts.

[RETURN](#)



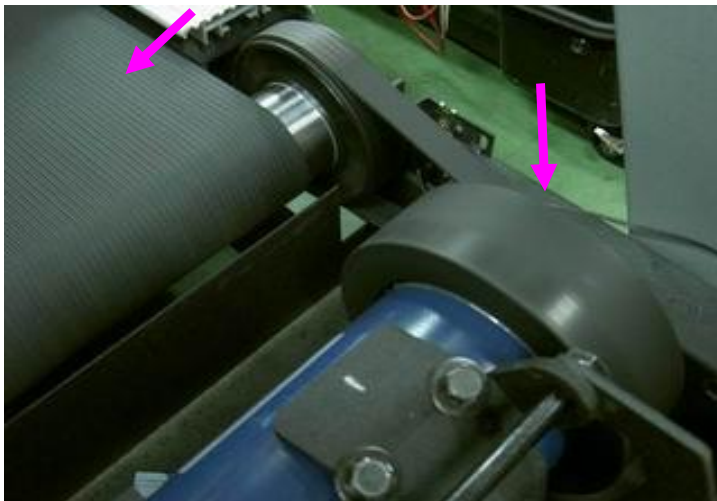
STEP2 :Push "START" to start treadmill.

[RETURN](#)



STEP 3 : When starting treadmill, motor & running belt react.

[RETURN](#)



STEP 4 : After 7~10 sec shows "E1" .

(Different location shows in different model.)

[RETURN](#)



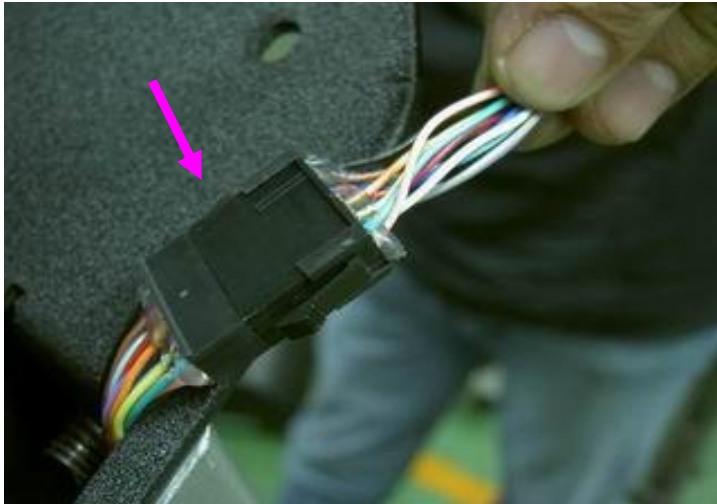
# Treadmill Trouble Shooting Guide(Error code check eliminate)



# Treadmill Trouble Shooting Guide(Error code check eliminate)

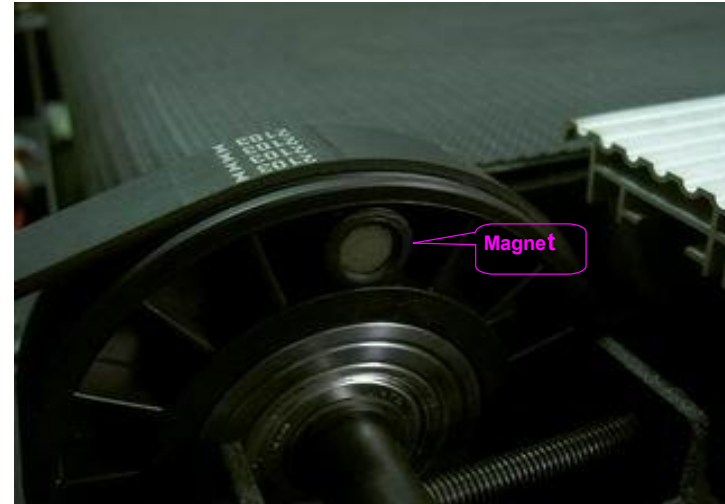
STEP 5 : Checking upper & lower wire connection condition.

[RETURN](#)



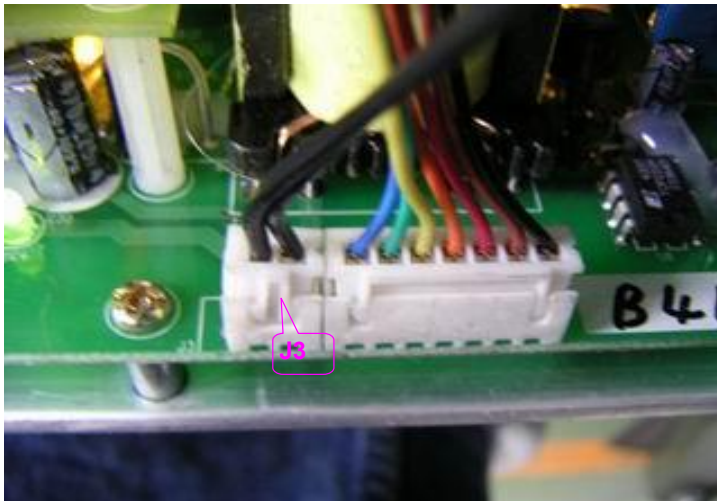
STEP 6 : Check condition of magnet on front roller.

[RETURN](#)



STEP 7 :Check J3 connector condition.

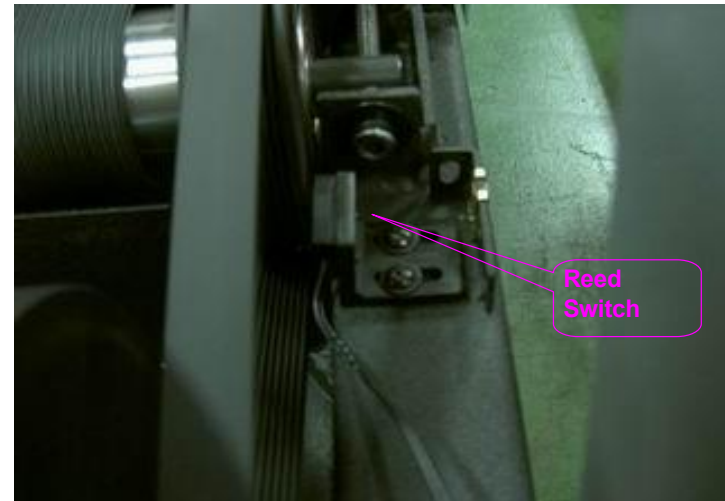
[RETURN](#)



STEP 8 : Check reed switch condition

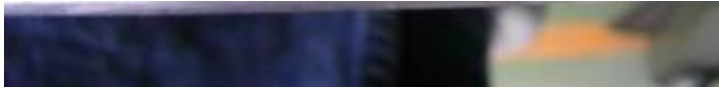
(Use multimeter OHM to check reed switch condition)

[RETURN](#)



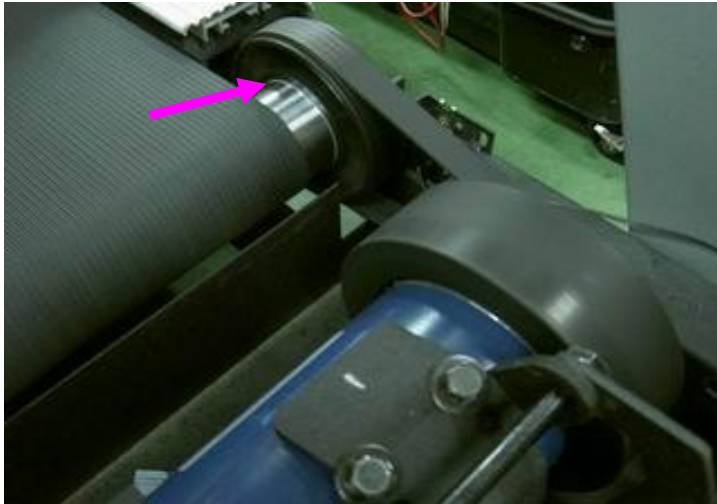


## Treadmill Trouble Shooting Guide(Error code check eliminate)



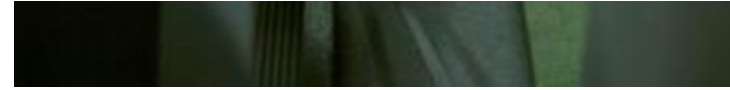
STEP 9 : Check if grooving belt slip  
(When man on treadmill, running belt tuns slowly & get slippy)

[RETURN](#)



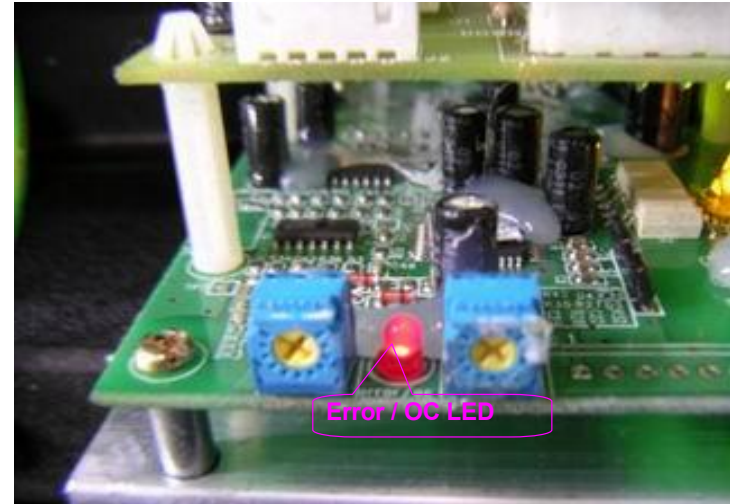
STEP 11 :Check D25 is on or not.

[RETURN](#)



STEP 10 : Check OC LED(Overload LED) is on or not.

[RETURN](#)



STEP 12 :Check upper board "start enable signal" is on or not  
(If D25 isn't on, change a new PCB)

STEP 13 :Check REL1 on MCB is on , then check relative driving parts condition.

(If D25 light is on, but can't drive motor working. Suggest changing a new MCB and broken MCB return Steelflex for further checking.)

STEP 14 : OC LED on - check lubricity , apply Steelflex silicon oil properly between running belt & deck .

STEP 15 : After step 14 still can't solve overload problem, suggest to change a new DC motor.

# Treadmill Trouble Shooting Guide(Error code check eliminate)



[RETURN](#)